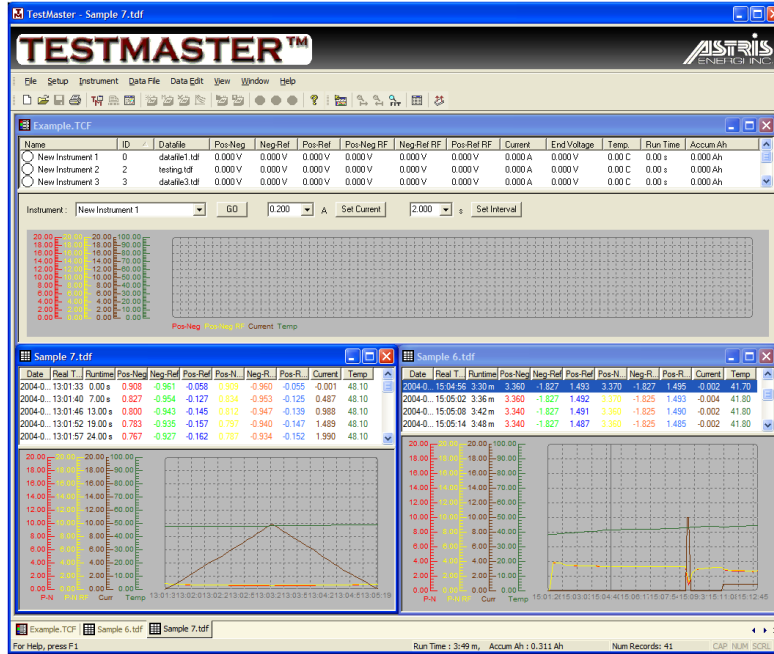


TESTMASTER™ Software and TLIF Interface Module are designed to enhance the functionality of TL5 Intelligent Test Loads.



System Requirements

PC-compatible computer

32 MB of RAM

4 MB of hard disk space for installation

Hard disk space for storage of acquired data (backup solution for this data is recommended)

CD-ROM drive

Available serial port

Windows NT 4.0 or higher, Windows 95 or later, Windows XP

MKU Canada Inc. 2008 reserves the right to change this specification without notice.

TESTMASTER™ Software is a powerful, integrated software package designed for testing of fuel cells and batteries. It runs on a PC computer in a Windows environment. It communicates with up to 16 TL5 Intelligent unit in a daisy-chain cable configuration, by means of a single RS-485 serial port. TESTMASTER™ Software performs all the tasks required in short-term or long-term testing of fuel cells or batteries - monitoring, control, customized load profile, data collection and storage, and graphical data representation. TESTMASTER™ Software includes all Windows standard user interface features including multiple document support, dockable toolbars, tool tips, and context sensitive menus, making the application very user friendly.

TLIF Interface Module is a serial communication converter and power distribution module. Its first function is to convert serial signals coming from the computer serial port COM1 or COM2 from the RS-232 protocol to the RS-485 protocol to allow daisy-chaining of the TL instruments. Its second function is to provide power to all TL5 TEST LOADS through the daisy-chain connection, eliminating the need for individual power supplies.



Connect TLIF with up to 16 TL5 Intelligent Test Loads using daisy-chain cables in sequence for a complete, scalable solution for research, development or quality control testing.



Connect up to 16 TL5 Test Loads!